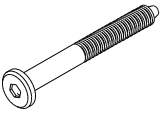
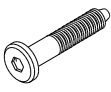
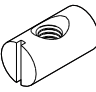
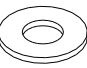
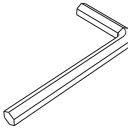


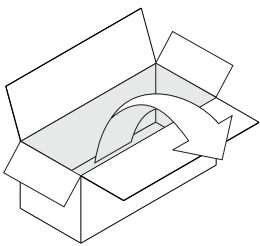
FLOW DESK - 2 DRAWERS

ASSEMBLY INSTRUCTIONS FOR DESK INSTALLATION



HARDWARE & TOOL ENCLOSED

				
JCBC SCREW M6x70 (2pcs)	JCBC SCREW M6x30 (9pcs)	BARREL NUT M6 (2pcs)	WASHER M6x13 (11pcs)	ALLEN KEY

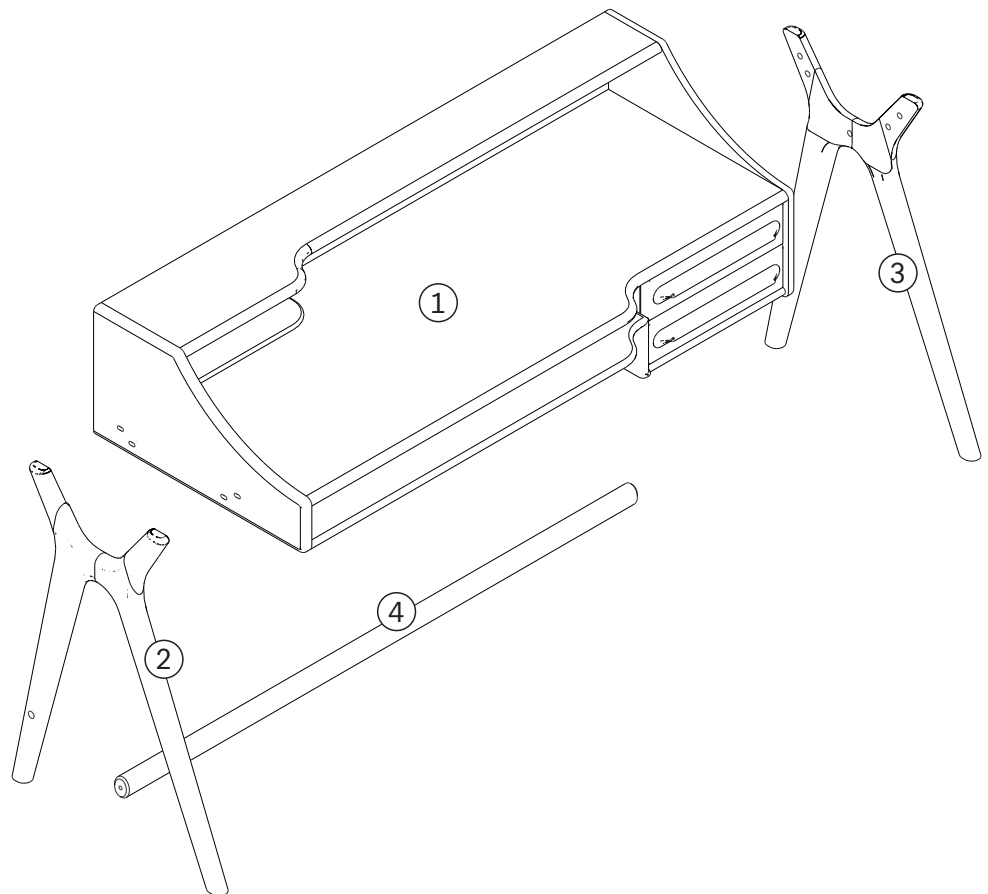


IN YOUR PACKAGE :

ASSEMBLY INSTRUCTIONS
HARDWARE (AS LISTED ABOVE)

PARTS TO BE INSTALLED

1. DESK BODY (1 pc)
2. LEFT LEG (1 pc)
3. RIGHT LEG (1 pc)
4. STRETCHER (1 pc)

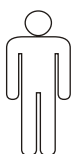


LEGS ARE SPECIFIC FOR LEFT AND RIGHT PLACEMENT

SYMBOLS



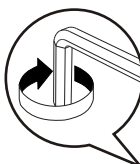
DIRECTION



NUMBER OF
PERSONS NEEDED

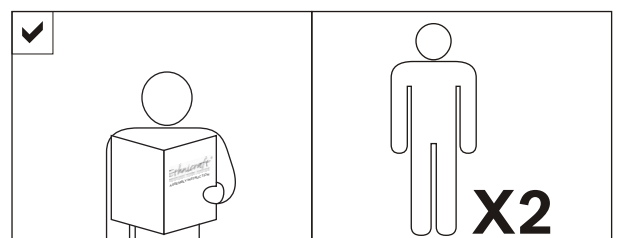


USE HAND



USE ALLEN KEY
TO TIGHTEN

NOTICE

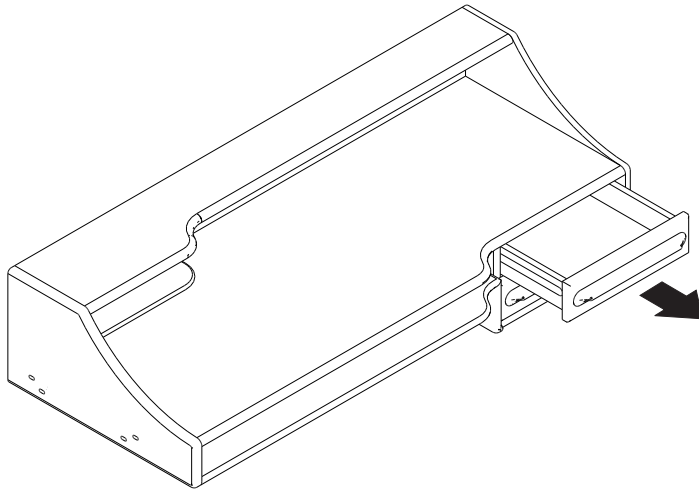


FLOW DESK - 2 DRAWERS

ASSEMBLY INSTRUCTIONS FOR DESK INSTALLATION



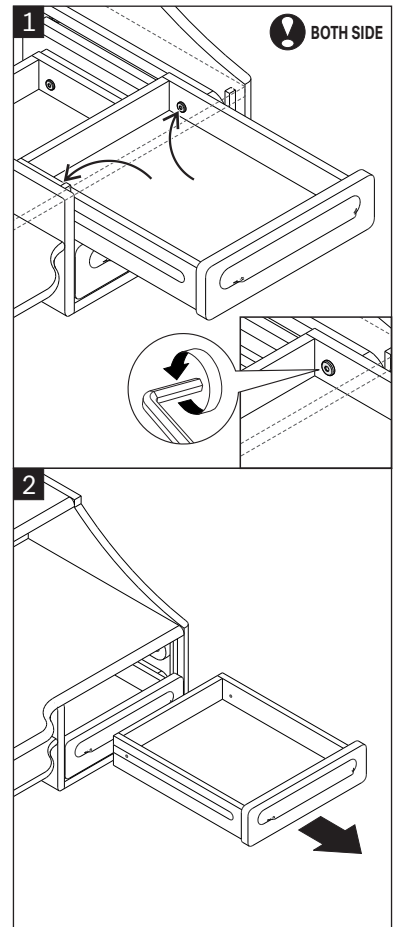
A REMOVING DRAWERS FROM DESK BODY



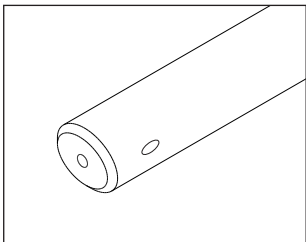
- BEFORE ASSEMBLING, REMOVE ALL CONTENTS FROM THE BOX AND LAY OUT ON THE FLATTENED CARTON, CARPETED AREA, OR ANOTHER PROTECTIVE SURFACE TO PREVENT DAMAGE WHILE ASSEMBLING.



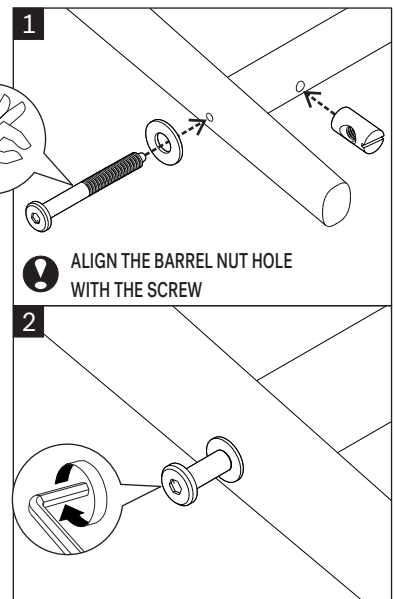
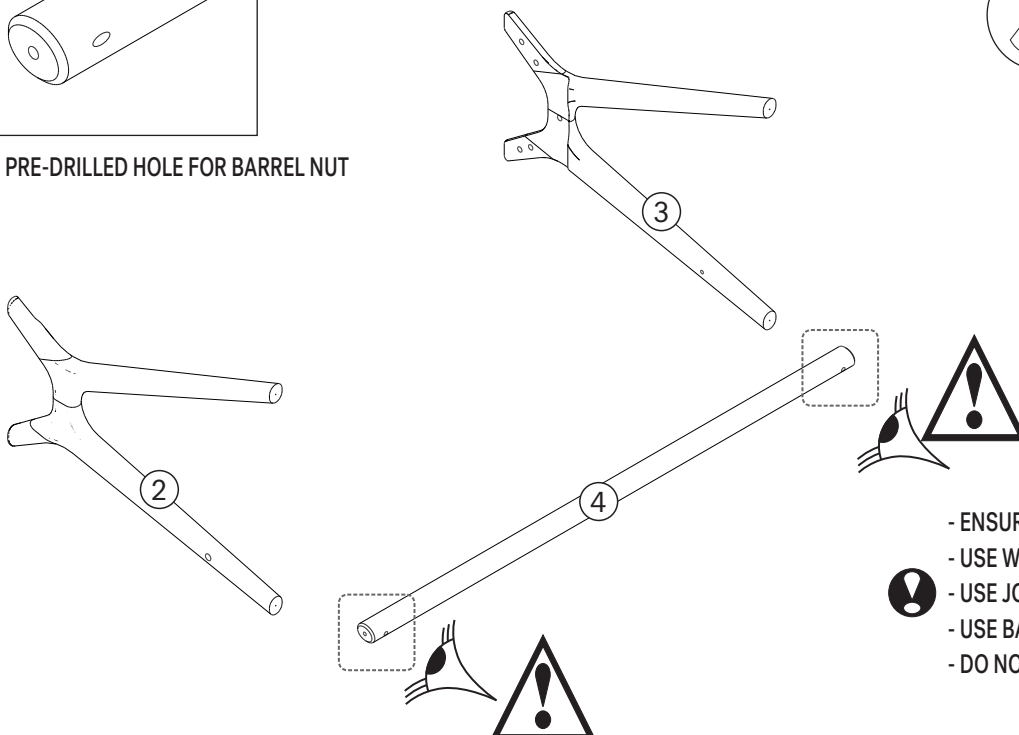
- REMOVE THE STOPPER SCREWS FROM THE DRAWER. DO NOT DISCARD THEM—THEY WILL BE USED IN STEP E.
- REPEAT FOR THE OTHER DRAWER.



B INSTALLING STRECHER TO THE LEGS



PRE-DRILLED HOLE FOR BARREL NUT



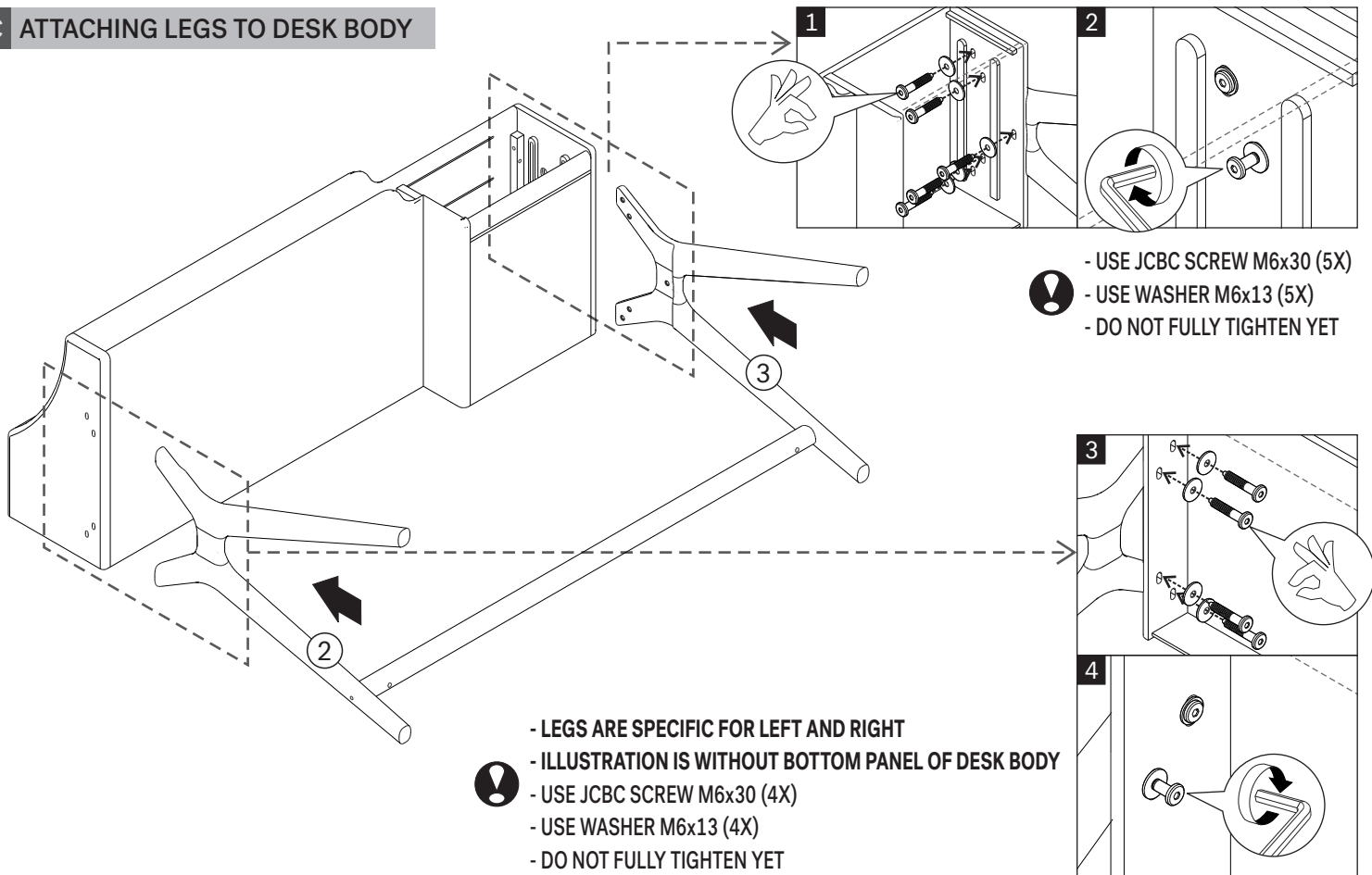
- ENSURE THE PRE-DRILLED HOLE FACES DOWNWARD
- USE WASHER M6x13 (2X)
- USE JCBC SCREW M6x70 (2X)
- USE BARREL NUT M6 (2X)
- DO NOT FULLY TIGHTEN YET

FLOW DESK - 2 DRAWERS

ASSEMBLY INSTRUCTIONS FOR DESK INSTALLATION

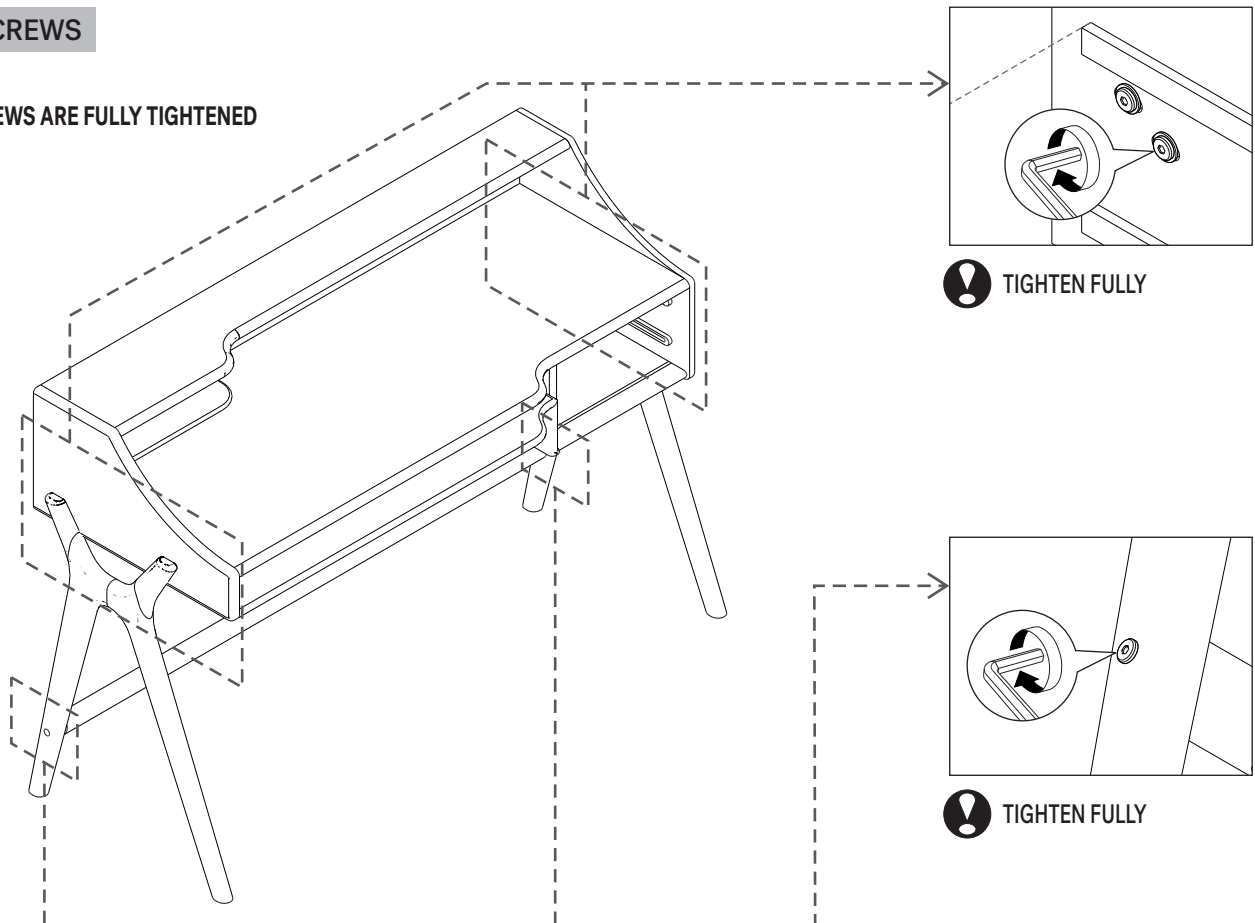


C ATTACHING LEGS TO DESK BODY



D ADJUST ALL SCREWS

! ENSURE ALL SCREWS ARE FULLY TIGHTENED

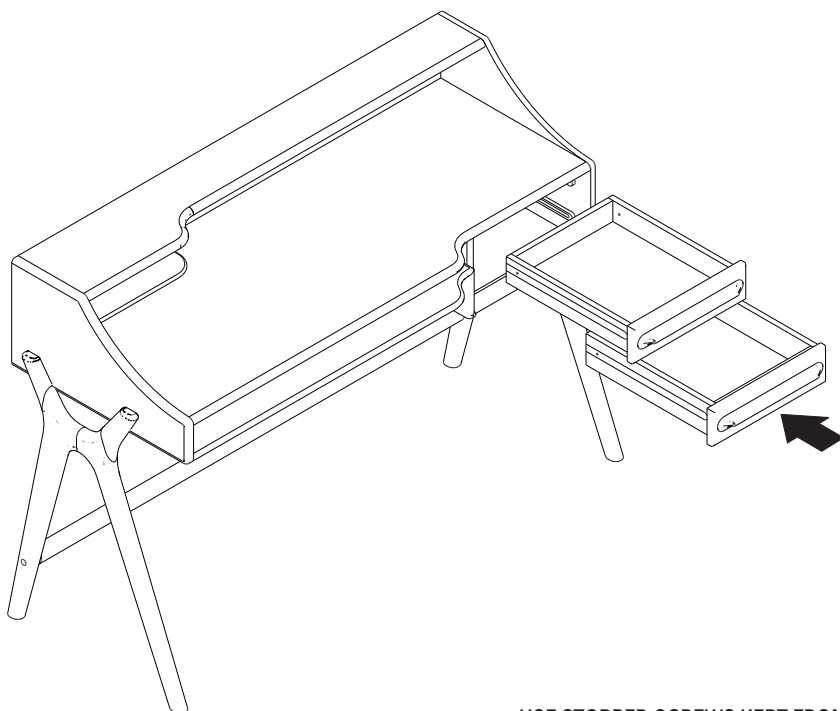


FLOW DESK - 2 DRAWERS

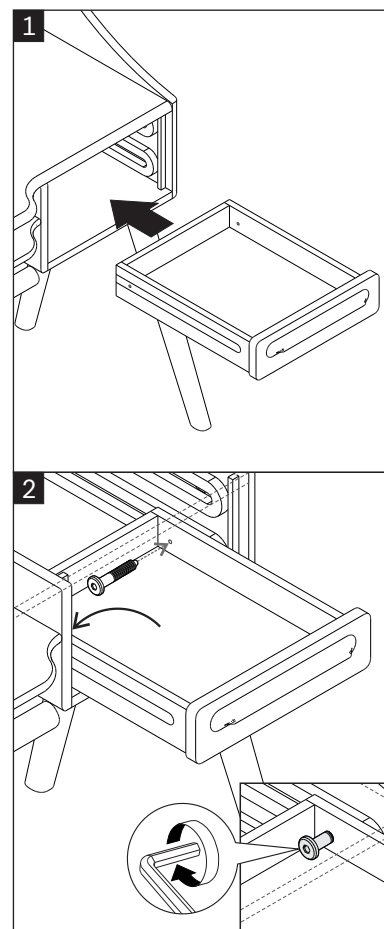
ASSEMBLY INSTRUCTIONS FOR DESK INSTALLATION



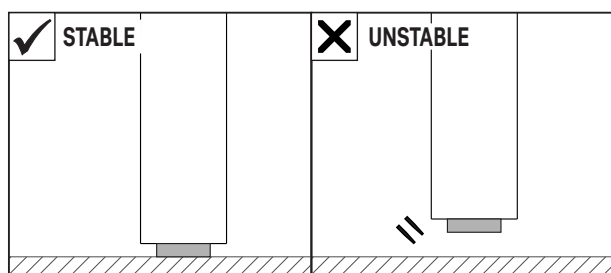
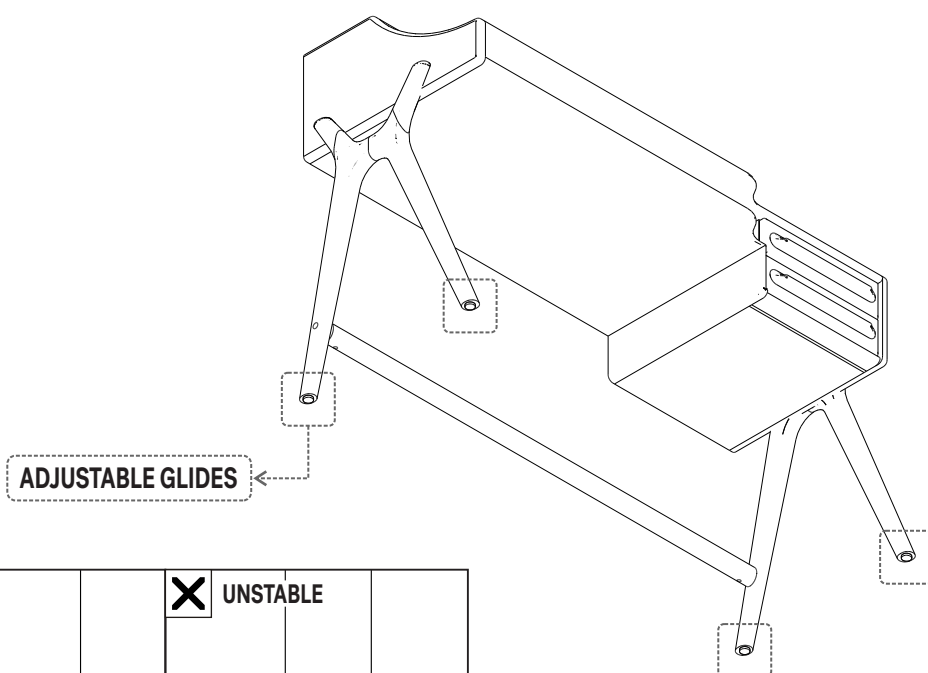
E REPLACING THE DRAWERS



- USE STOPPED SCREWS KEPT FROM STEP A
- FULLY TIGHTEN
- START ON THE BOTTOM DRAWER
- AND REPEAT THE STEPS FOR THE TOP DRAWER



F MODIFY THE ADJUSTABLE GLIDES



NOTE :
TO ENSURE STABILITY, ALL GLIDES SHOULD BE ADJUSTED
TO MAKE EVEN CONTACT WITH THE FLOOR.

